

# Washer Huller LE1230

## Continuous or cycle operation

- Power supply
- 400V three phase.
- Power 11KW.
- Variable speed drive with selector (hulling/draining)
- Adjustment of the output damper by crank handle

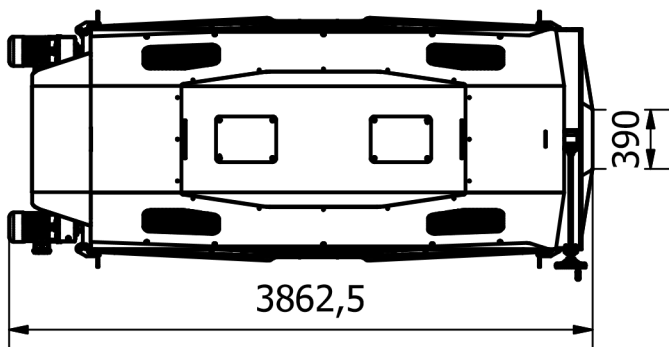
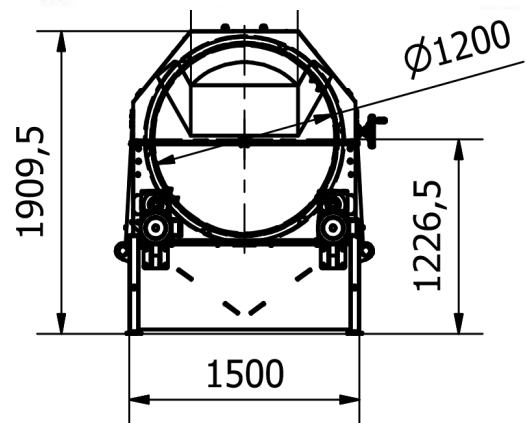
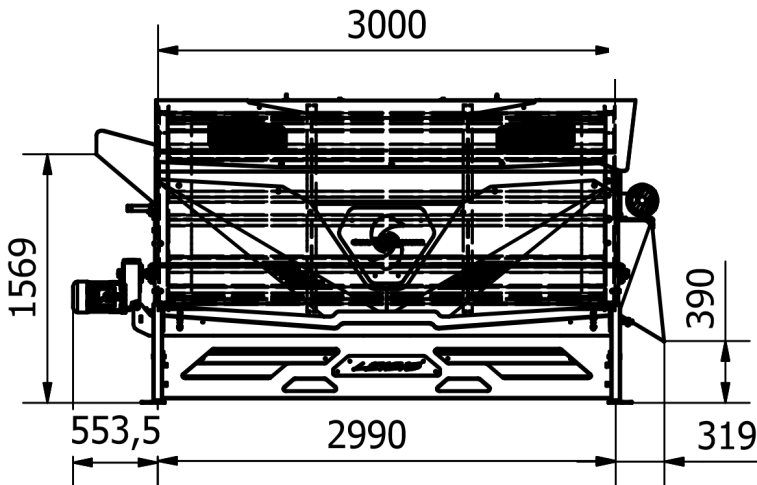
## Batch operation

- Useful capacity: 1,16 m<sup>3</sup> (800 kg of fresh unpeeled nuts)
- Hulling time: 15 to 25 min.

## Continuous operation

- Behind a washer
- Up to 5t/h

Option: motorised outlet register



Dimensions :  
 - Width: 1.55m.  
 - Longueur : 3,9m  
 - Height: 1.9m

